

TECHNICAL RIDER
ZARYADYE MOSCOW CONCERT HALL

1. ENTRANCE

The concert hall building is an important element of the park, inscribed in the structure of its artificial relief.

The main entrance of the concert hall is oriented towards archways of Kitaigorodskaya wall. The approach to the building for cars is carried out from Kitaigorodskii proezd and guests from Zaryadye park landscape.

The concert hall building has 4 floors and 2 underground floors.

2. FOYER

Spectators foyer combines a single multi-light space with a panoramic glass facade and placed on multiple levels around the Grand Hall. Walls of the foyer have decorative panels of glass-magnesite veneered with natural wood. The ceiling is lined with 2D panels of artificial stone sheets with LED lighting integrated.

The floor is made of natural granite stone.

Foyer level -1: Area 1456 sq. m equipped with 2 video screens (42");

Foyer level 1: Area 1757 sq. m equipped with 14 video screens (42");

Foyer level 2: Area 878 sq. m equipped with 22 video screens (42").

All spectators foyers are equipped with multimedia touch screens.

The total area of foyers is 4091 sq. m.

The main wardrobe for 1400 guests, and an additional wardrobe for 200 guests.

3. GRAND HALL

3.1. STAGE

The area of the stage is 325.6 sq.m.

The height from the stage to the acoustic ceiling is from 15 to 19.5 m.

Stage dimensions: width - 17-21 m, depth – 16 m.

The depth of the scene with a raised orchestra pit - 23 m.

Orchestra pit dimensions: 6.8 m x 18.8 m.

The orchestra pit is located in front of the proscenium and has the lifting and lowering platforms, allowing:

- form orchestra pit for various numbers of musicians,
- to transform it into an increased proscenium
- get additional 106 seats of the stalls

Mechanical equipment designed with the possibility to transform the auditorium, the stage, lighting, sound and other processing equipment, as well as for the installation of the decorating elements allow conducting events of any complexity and any genre.

3.1.1. GRAND HALL STAGE MECHANICAL EQUIPMENT

Lower mechanization of the stage:

- 31 lifting and lowering platforms, equipped with a mechanism SERAPID (France) LinkLift series for orchestra and choir with the possibility of transformation into one level. Platforms frame static scene a semicircle the size 260 sq. m and have a load capacity of 200 kg / sq. m;

- orchestra pit transforms in three possible positions:
 - increased proscenium - without orchestra pit;
 - orchestra pit;
 - additional 5 rows of the stalls due to the overlapping area of the orchestra pit.

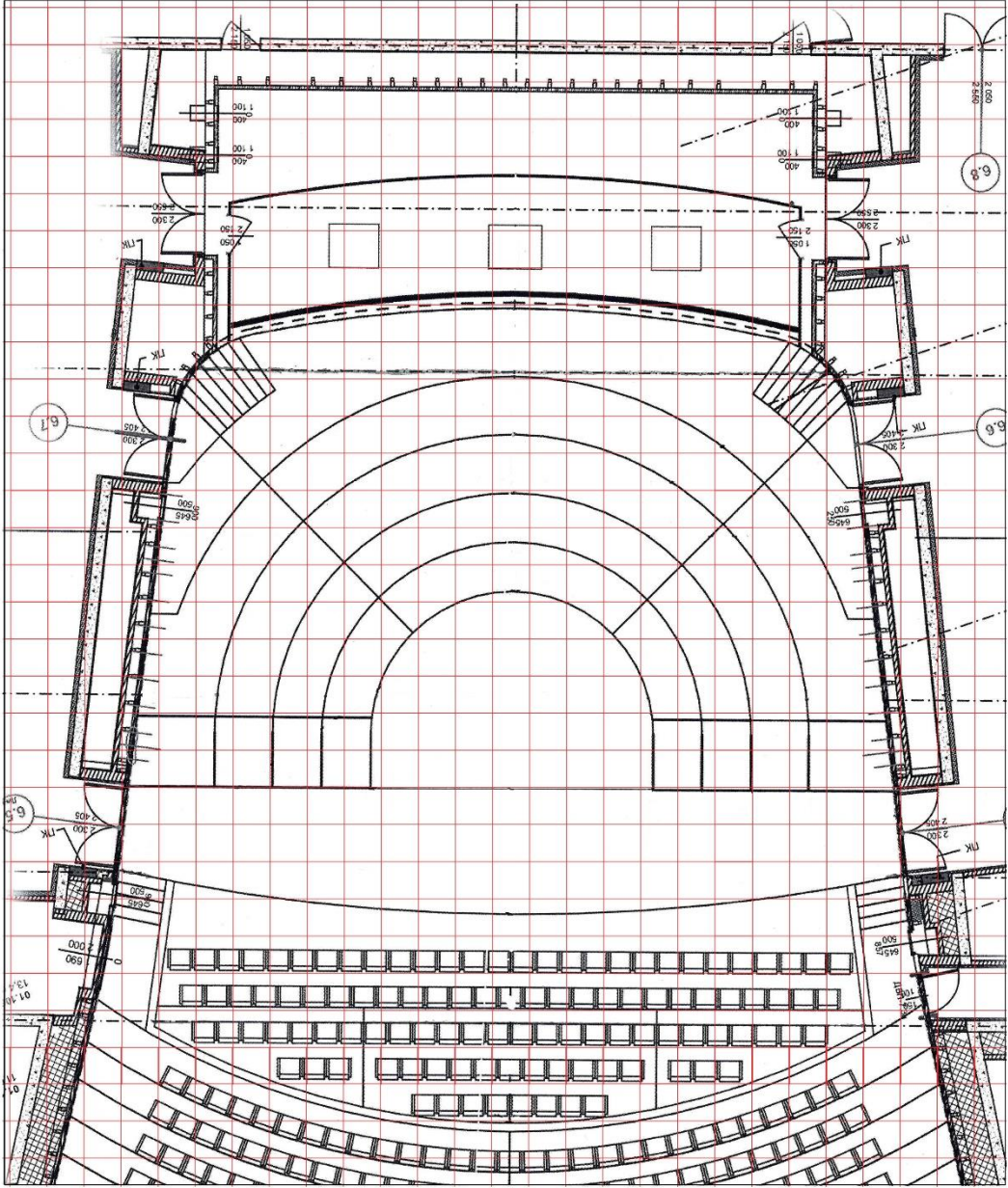
Upper mechanization: soffit ups, dot and decor ups.

3.1.2. MECHANICAL EQUIPMENT SPECIFICATION

The mechanization department chief of Zaryadye Moscow concert hall provides detailed information of the Grand Hall mechanical equipment on request.

Contact information: +7 (495) 531-04-67.

GRAND HALL STAGE AND ORCHESTRA SPACE SCHEME



3.2. GRAND HALL

There is a pipe organ MUHLEISEN (France) installed.

The Hall has a complicated form close to the rectangular with the area on the ground level 1020 sq.m including the stage.

The main elements of the Grand Hall have flowing lines without flat and parallel surfaces. Seats are arranged by amphitheater configuration.

- The Grand Hall is 25 900 m³.
- The Hall maximum length (from the pipe organ to the balcony wall) is 53 m.
- The auditorium length is 32 m.
- The layout (arrangement) of the hall is symmetrical towards the longitudinal axis.

The Grand Hall accommodates 1,578 spectators.

Ground:

- transformable seats – 632;
- seats on orchestra pit – 106;
- accessible seats – 8.

First-tier balcony located from three sides of the stage:

- untransformable seats – 684;
- blitche seats (transformable seats behind the scene) – 90;
- accessible seats – 8.

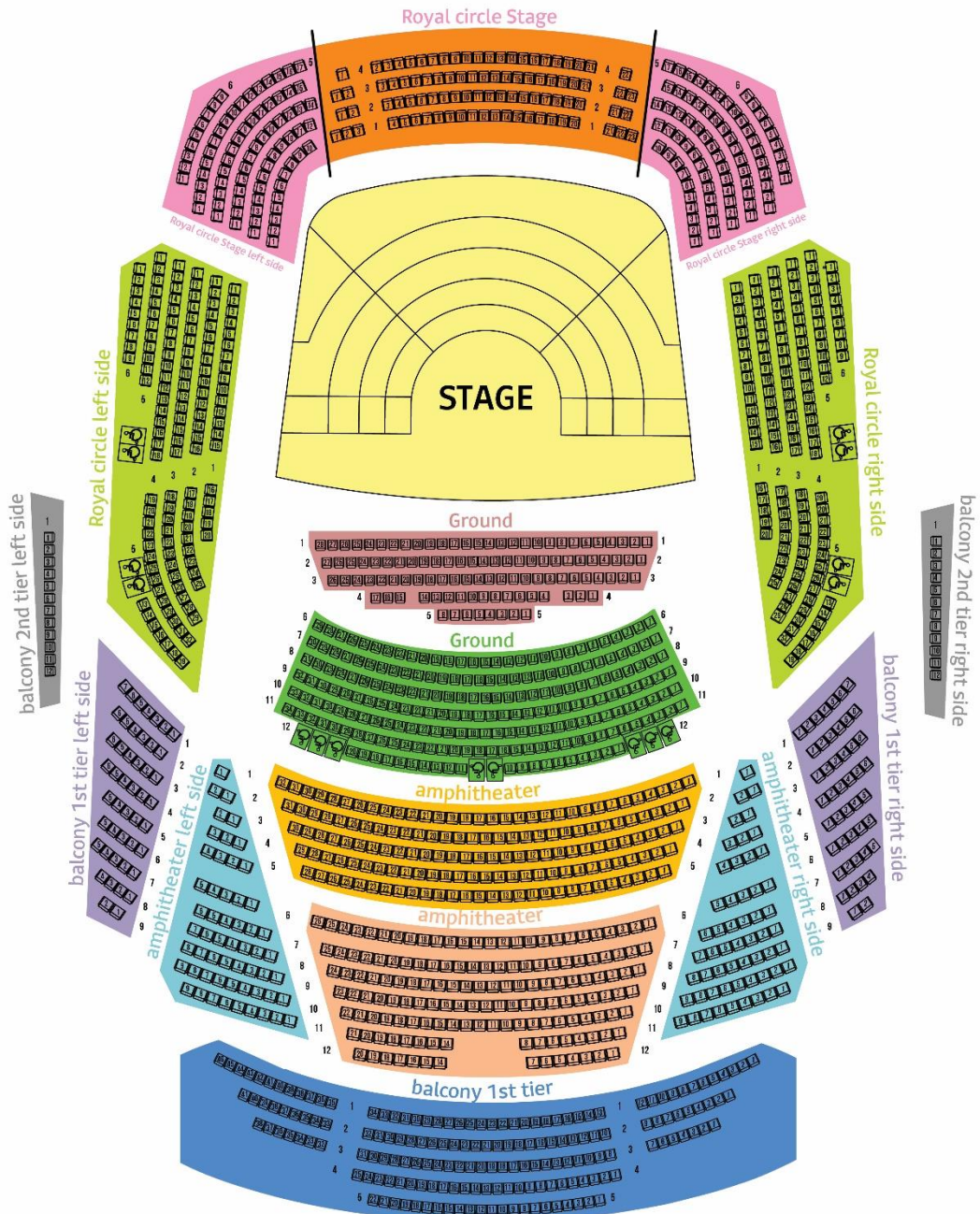
Second-tier balcony – 24 seats.

Directorate balcony – 24 seats.

Second-tier balcony accessible seats – 2.

GRAND HALL SEATS PLAN

ZARYADYE HALL



3.3. POWER SUPPLY

Optional three-phase / single-phase connection CEE 63A, CEE 32A, CEE 16A.

3.4. LIGHTING EQUIPMENT

The Grand Hall is equipped with the most modern lighting staging equipment. Lighting devices are represented by Clay Paky, Robert Juliat, ETC and other brands.

Panels ETC EOS Ti and MA Lighting grand MA2 light are used to control stage lighting.

The equipment is certified and corresponds to the electrical and fire safety norms, the requirements of the lowest possible energy consumption.

The head staging artistic of the Zaryadye Moscow concert hall provides detailed information about the Grand Hall lighting equipment on request.

Contact information: +7 (495) 531-04-66.

3.5. SOUND EQUIPMENT

The L'Acoustics KARA linear array allows achieving an equally distributed sound at any place in the Grand Hall. Mixing music program takes place on the digital remote Digico SD7B.

FOH-console locates at the back of the amphitheatre.

The monitor console locates within the stage space.

NEXUS STAR, DANTE complex routing system forms the exchange of audio streams between the Grand Hall, the Chamber Hall, recording studio, point for the broadcasting complex.

Microphones are represented by brands SCHOEPS, DPA, NEUMANN, SENNHEISER. Mobile broadcasting complex placed near the southeastern part of the building.

The head of AV (audio, video) equipment of the Zaryadye Moscow concert hall provides detailed information on request.

Contact information: +7 (495) 531-04-65.

3.6. VIDEO EQUIPMENT

CHRISTIE D4K3560 video projector (30,000 ANSI lumens) reproduces direct projection on the motorized Gerriet projection screen 11 m x 7 m.

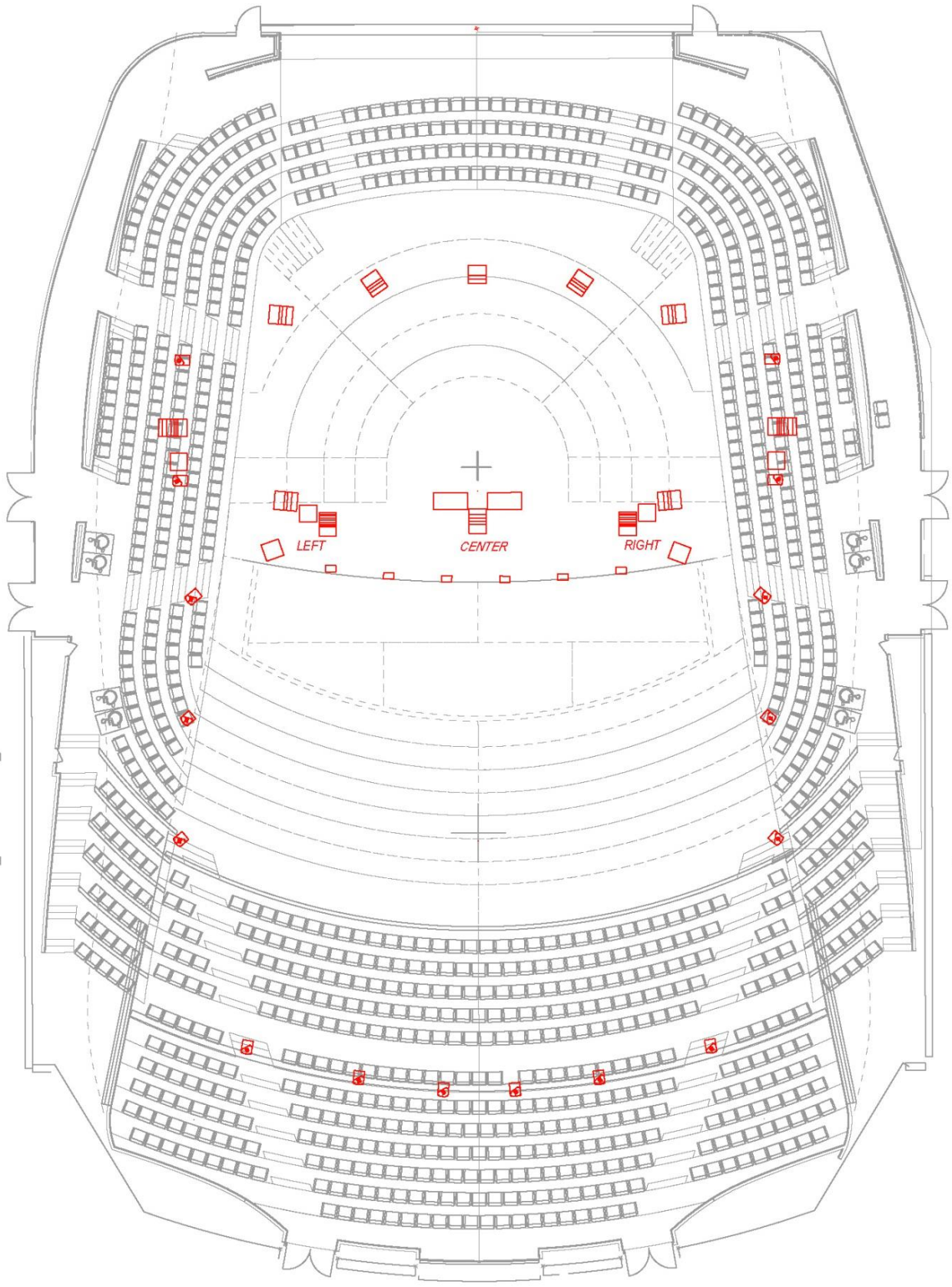
The head of AV (audio, video) equipment of the Zaryadye Moscow concert hall provides detailed information about video hardware on request.

Contact information: +7 (495) 531-04-65.

3.7. GRAND HALL BASIC EQUIPMENT

| Category | Description |
|----------------------------------|---|
| MIXING CONSOLE DIGICO SD7 | Digital mixing console 2 Powers, 3 TFT displays On the board: 12 mic/line INs, 12 OUTPUTs |
| MONITORING HEADPHONE | SENNHEISER HD25-1 II |
| MICROPHONES | BEYER, SENNHEISER, SHURE x 2 |
| WIRELESS MIC | SENNHEISER EM 3732-II reciever x 2 |
| 2-track PLAYERS | Tascam SS-CDR200 |
| | Tascam CD-200SB |
| | Tascam MD/CD 1MKIII |
| VIDEO PROJECTOR | CHRISTIE D4K3560 (30000 ANSI лм) |
| L-Acoustics Line Array System | Musical sound amplification system (порталы) (L-C-R) 22 x KARAI , Center 4 x KARAI, 8 x SUB18 |
| | DOWN FILLS (L-R) 8xKARAI + 2xSUB18 |
| | FRONT FILLS 4 x KARAI |
| | OUT FILLS 1 6xARCS FOCUS |
| | OUT FILLS 2 4xARCS FOCUS |
| | OUT FILLS 3 6xARCS FOCUS |
| | DELAY(балкон) 8 x La X12 |

GRAND HALL LINEAR ARRAY AND THE DISTRIBUTED AMPLIFICATION SOUND SYSTEM L'ACOUSTICS POSITION



4. CHAMBER HALL

The Chamber Hall is intended for chamber events, Symphony Orchestra rehearsals, recordings.

The Chamber Hall has a trapezoidal shape - the front and back walls are parallel.

- total floor area is 302 sq.m.,
- length of the hall is 21.3 m,
- average width is 14, 2 m,
- height 14 m.

The floor is flat with the possibility to set the portable stage in the narrow side of the hall.

Seating capacity – 396 seats.

Accessible seats - 2.

Balcony locates along the perimeter of the hall at a height of 6.2 m. and has 38 seats and standing places for 70 persons. Balcony depth varies from 1.5 to 2.2 m.

Possible dimensions of the portable scene:

- width of the stage – 10 m;
- depth of the stage from the edge of the proscenium – 5 m.

The head of the art-staged part of the Zaryadye Moscow concert hall provides detailed information about portable stage configuration on request.

Contact information: +7 (495) 531-04-66.

CHAMBER HALL SEATS PLAN

Legend:



Seats are mechanically attached to the floor in sections assembled of 2-3 pieces



Seat width: 550 mm



Portable stage dimensions: 2000*1000*30(h)



Accessible seats



Row number
Number of seats in a row



4.1. LIGHTING EQUIPMENT

The Chamber Hall is equipped with the most modern lighting staging equipment. Lighting devices are represented by brands Clay Paky, Robert Juliat, ETC and others.

ETC EOS Ti panels are used to control stage lighting.

The equipment is certified and corresponds to the electrical and fire safety, the requirements of the lowest possible energy consumption.

The head of the art-staged part of the Zaryadye Moscow concert hall provides detailed information about lighting equipment on request.

Contact information: +7 (495) 531-04-66.

4.2. SOUND EQUIPMENT

The L'Acoustics KARA linear array allows achieving an equally distributed sound at any place in the Grand Hall. Mixing music program takes place on the digital remote Digico SD7B.

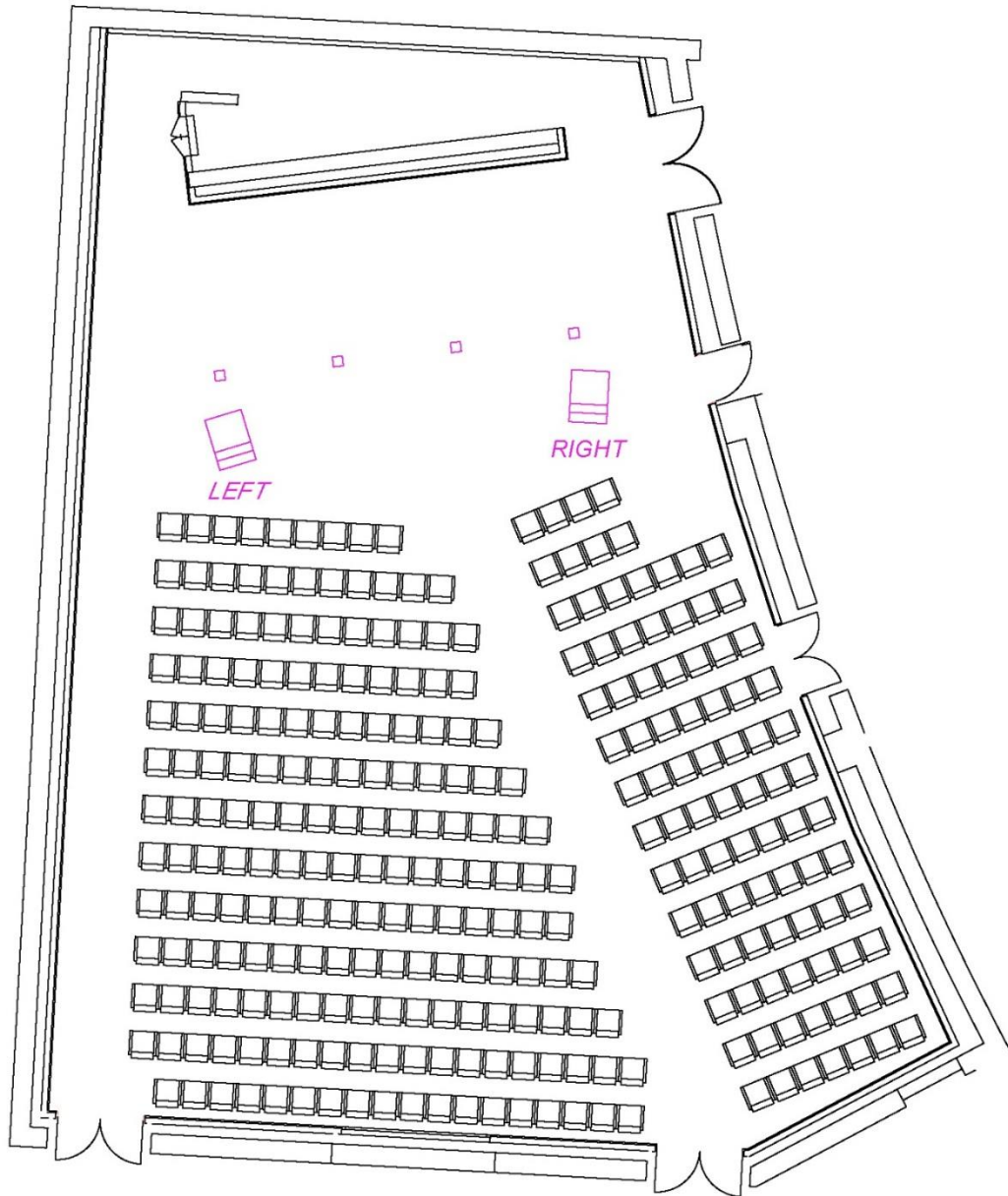
NEXUS STAR, DANTE complex routing system forms the exchange of audio streams between the Grand Hall, the Chamber Hall, recording studio, point for the broadcasting complex.

Microphones are represented by brands SCHOEPS, DPA, NEUMANN, SENNHEISER. Mobile broadcasting complex placed near the southeastern part of the building.

The head of AV (audio, video) equipment of the Zaryadye Moscow concert hall provides detailed information on request.

Contact information: +7 (495) 531-04-65.

CHAMBER HALL DISTRIBUTED AMPLIFICATION SOUND SYSTEM L'ACOUSTICS SCHEM



4.3. VIDEO EQUIPMENT

CHRISTIE BOXER 4K30 video projector (30,000 ANSI lumens) reproduces direct projection on the motorized Gerriet projection screen 8 x 5m.

The projector is positioned in the Chamber hall space.

The head of AV (audio, video) equipment of the Zaryadye Moscow concert hall provides detailed information about video hardware on request.

Contact information: +7 (495) 531-04-65.

4.4. CHAMBER HALL BASIC EQUIPMENT

| Category | Description |
|----------------------------|---|
| MIXING CONSOLE DIGICO SD10 | Digital mixing console On the board: 8 mic/line INs, 8 OUTPUTs |
| PA SYSTEM | L'Acoustics ARCS WIDE |
| MONITORING HEADPHONE | BEYER DYNAMIC DT770 |
| MICROPHONES | BEYER, SENNHEISER, SHURE x2 |
| WIRELESS MIC | SENNHEISER EM 3732-II reciever x2 |
| 2-track PLAYERS | Tascam SS-CDR200 |
| | Tascam CD-200SB |
| | Tascam MD/CD 1MKIII |
| VIDEO PROJECTOR | CHRISTIE BOXER 4K30 (30000 ANSI лм) |

ZARYADYE MOSCOW CONCERT HALL HARDWARE SPECIFICATIONS

MICROPHONES

| BRAND | TYPE | | | | |
|------------------|----------------------------------|------------------------------|-----------------------------------|------------------------------|----------------------------|
| AKG | C 414 XLS x 4 | C 451 B Matched pair | C 451 B x 12 | | |
| DPA (B & K) | 4099 x 8 | 4099 + DC4099 DRUM x 6 | GC4099 x 2 | BC4099 Bass x 2 | 4099Sax x 5 |
| | STC4099 Sax / Trumpet x 15 | CC4099 Cello x 6 | 3511 A Stereo Kit x 2 | 3506 A Stereo Kit x 2 | |
| BEYER DYNAMIC | M-88 TG x 4 | | | | |
| ELECTROVOICE | RE 320 x 2 | | | | |
| NEUMANN | M 150 Tube set x 2 | Tube set 149 M | TLM 170 R MT Stereo set x 2 | U 87 Ai Stereo set x 2 | KMS 105 x 3 |
| ROYER | R-121 MKII | SF-2 x 4 | SF-24 | | |
| SCHOEPS | MK2g x 8 | MK4g x 20 | CMC 6Ugxt x 44 | | Decca Tree Set "2H" |
| | RC 1200 x 8 | CCM 4 x 8 | CCM 41 x 8 | CCM 4 x 22 | 5 VA Double Bass x 2 |
| | RC Set "Singer" x 20 | MK 2Hg x 4 | MK 2Sg x 2 | MK 21g x 4 | MK 41g x 8 |
| | | | | | |
| SENNHEISER | MKH20-P48 x 4 | ME 34 | MZH 3015 | e904 x 4 | e906 x 2 |
| | e914 x 4 | e 609 | MD 441-U x 6 | e 600 DRUM | |
| | MKH40 -P48 x 6 | MKH 8040 x 6 | | | |
| SHURE | SM-58 LCE x 8 | SM 58 S x 8 | | | |

DIRECT BOXES, MIC PREAMPS**(DI BOXES, PRE-AMP)**

| BRAND | TYPE | | | | |
|--------|--------------------------|--------|--------------------------|--------|--------------------------|
| AVALON | U-5 x 2 | AVALON | U-5 x 2 | AVALON | U-5 x 2 |
| RADIAL | RADIAL DI-Box PRO D2 x 4 | RADIAL | RADIAL DI-Box PRO D2 x 4 | RADIAL | RADIAL DI-Box PRO D2 x 4 |
| | PRODI x 4 | | PRODI x 4 | | PRODI x 4 |

RADIO (WIRELESS)

| BRAND | TYPE | | | | |
|------------|-----------------|-----------------|-------------|---------------|--------------------------|
| SENNHEISER | EM 3732-II x 13 | | | | SR 2050 IEM GW-X x 2 mon |
| | SKM 5200-II x14 | SK 5212-II x 22 | | | EK 2000 IEM-GW-X x 8 mon |
| | ME 5005 x 2 | KK 104S x 12 | HSP 4-3 x 8 | MKE 1-4-3 x 8 | |

VIDEO PROJECTION EQUIPMENT

| BRAND | TYPE |
|----------|---|
| CHRISTIE | BOXER 4K30, D4K3560 |
| GERRIETS | RUNWAY PLUS 11 m x 7 m RUNWAY PLUS 8 m x 5 m |
| JVC | MONITOR 55 "x 2 |
| ROLAND | Roland V-800HDMK2 |

LIGHTING EQUIPMENT

The head staging artistic of the Zaryadye Moscow concert hall provides detailed information about lighting equipment on request.

Contact information: +7 (495) 531-04-66.

MUSICAL INSTRUMENTS

The head staging artistic of the Zaryadye Moscow concert hall provides detailed information about musical instruments on request.

Contact information: +7 (495) 531-04-66.

ADDITIONAL AUDIO AND VIDEO EQUIPMENT

The Head of AV (audio, video) equipment of the Zaryadye Moscow concert hall provides detailed information on request.

Contact information: +7 (495) 531-04-65.

5. DELIVERY AND LOGISTICS

The concert hall has its own logistics area at -1 floor, ground unloading gate, parking capacity for two trucks.

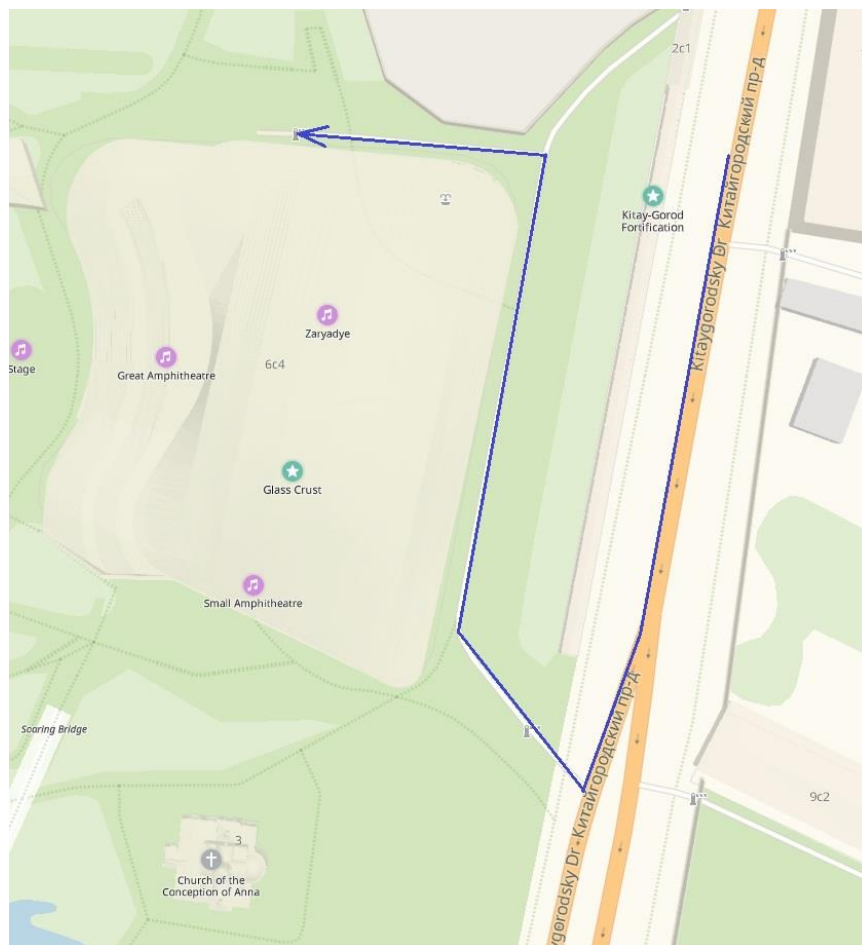
The width of the passage to the logistic zone at street level is 3.7 m,

The width of the passage to the unloading zone is 11 m.

Entrance gates restricted the width of 6 m and a height of 3.5 m.

The logistics area is 1078 sq. m.

LOGISTICS SCHEME



6. ARTISTIC AND REPETITORIUM

Concert complex has 12 arty rooms:

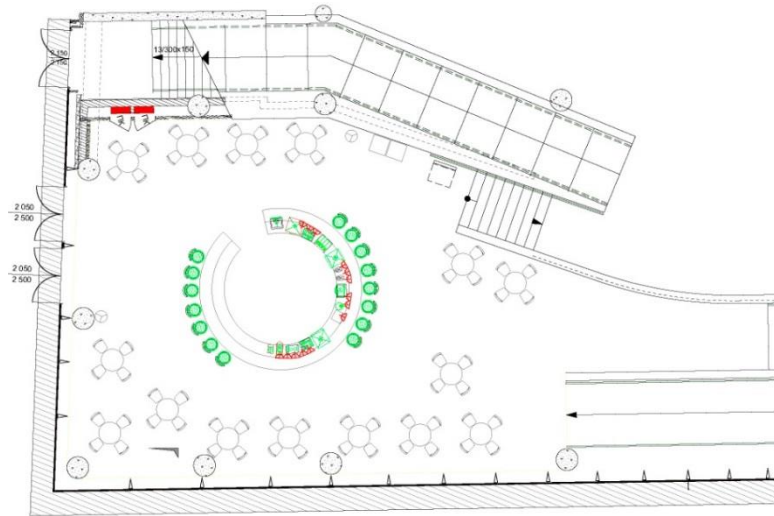
- 4 rooms (15, 15, 25, 25 persons);

- 8 rooms (2-4 persons).

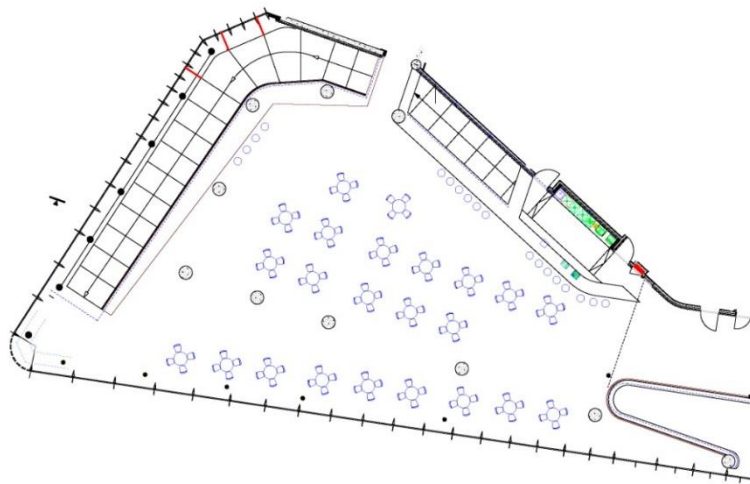
2 dressing rooms, 4 superior artistic rooms, 8 rehearsal rooms for music lessons.

7. BARS

1st floor – bar for 75 seats, 228.6 square meters:



2nd floor – cafe for 110 seats, 483.4 sq. m:



2nd floor – cafe for 130 seats, 500.6 sq. m:

